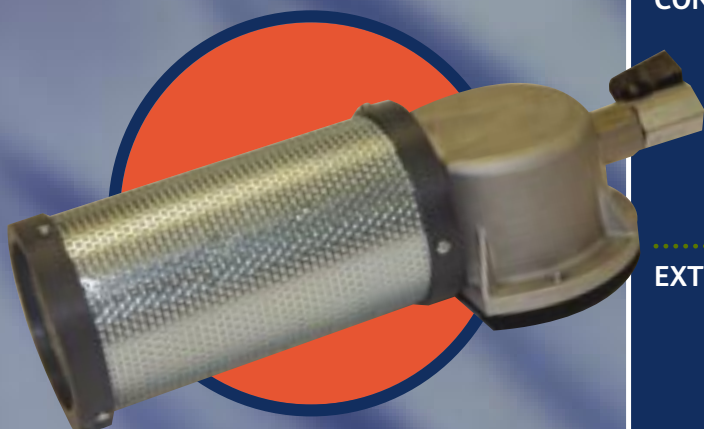


# Pneu-Power

High suction conveying without the hassle of pumps, blowers or electricity...



## APPLICATIONS

**CONVEYING** Tank Filling/Emptying  
Hopper Loading  
Powder  
Granules  
Swarf Removal  
Dust  
Liquids

**EXTRACTION** Fumes  
Liquids  
Dust  
Waste Material



The Beckair Pneu-Power is a bladeless, motorless fan which connects to flexible hose and gives high vacuum or high flow for conveying and extracting all kinds of materials in process, food and manufacturing industries.

Using a small volume of compressed air as the power source, the Pneu-Power utilises the "Coanda" effect to draw larger volumes of ambient air into the device to amplify the air flow by up to 25 times.

The Pneu-Power has very high performance and is capable of moving material over very long distances

- No moving parts - means the Pneu-Power is maintenance free
- No electricity required - means they are safe to use with liquids and wet material
- Adjustable flow control - using air valve and inlet pressure
- Energy efficient - means low running costs
- Quiet Operation (less than 80 dB(A))

## TECHNICAL INFORMATION - PNEU-POWER

PART NUMBER	AIR INLET BSP	AIR CONSUMPTION @ 6 BAR		OUTLET AIR FLOW		VACUUM		
		SLPM	SCFM	SLPM	SCFM	MM WG	INCH WG	INCH HG
BPNEUPOWERA	1/4"	885	31	2250	80	2072	82	6
BPNEUPOWERB	1/4"	885	31	900	32	5700	224	16.5

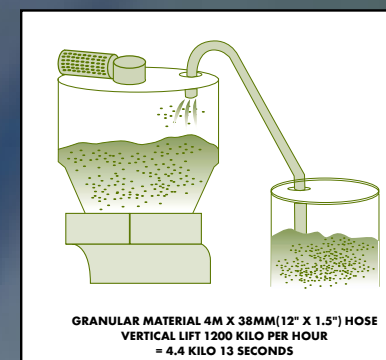
The Pneu-Power is extremely robust, being manufactured from cast aluminium and is designed for use in harsh environments.

Type A offers higher flows, Type B offers higher suction

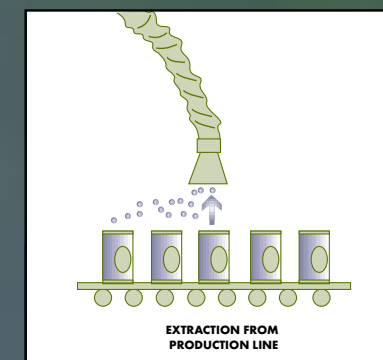
For applications where extraction only is required, the silencer (supplied) diffuses the air and reduces the noise from the device.



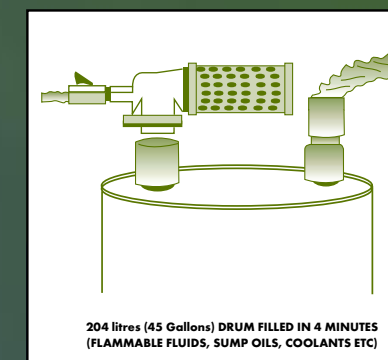
## THE PNEU-POWER IN USE



DRUM FILLING



EXTRACTING



HOPPER LOADING



If you have special requirements, please call our technical support engineer who will be pleased to assist you.